

# Instructions for installing an electriccar charger

This guide allows you to assess whether the electric car charger you are ordering can be installed under the [standard installation](#) conditions shown on our website or there is a need for additional work that is not included in the standard price and for which you will need a specified installation price quote prepared by us together with the charger price quote.

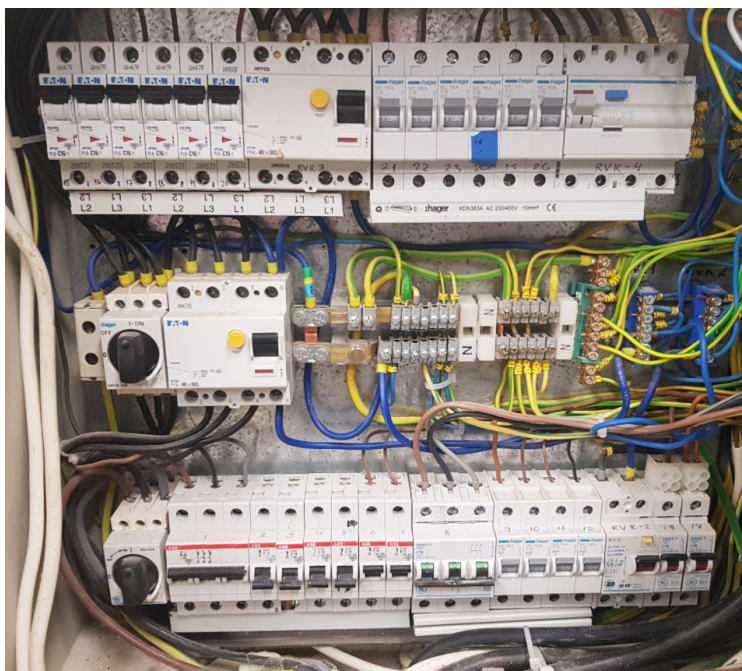
**Sending photos in advance according to the guide will give you, as a customer, and us, as a contractor, better assurance that the charger can be installed under the conditions and at the price agreed in the contract, and that no surprises will occur during the installation.**

NB! Sending photos is optional.

To receive an assessment, please send the following photos at [energiateenused@energia.ee](mailto:energiateenused@energia.ee):

- Photo of the electrical switchboard of your house (**Sample 1**)
- A photo of the detailed location where you wish to install the charger (**Sample 2**)
- Photo of the planned electrical cable path from the switchboard to the charger (**Sample 3**)

## SAMPLE 1 (PHOTO OF AN ELECTRICAL SWITCHBOARD OF A HOUSE)



This photo is necessary so that we can assess whether your electrical switchboard can accommodate the fuses necessary for the charger.

**NB!** Need for space varies for single- and three-phase chargers (see **Sample 4** and **Sample 5** at the end of this guide for more details)



### SAMPLE 2 (PHOTO OF A DETAILED INSTALLATION LOCATION OF A CHARGER)



This photo is necessary so that we can assess whether the charger can be properly attached to the wall of your house.

**NB!** If the installation of the charger is ordered to a separate charging post or if there is a need for additional digging, this automatically means that a price quote for additional work is prepared for the installation!

### SAMPLE 3 (PHOTO OF A PLANNED ELECTRICAL CABLE ROUTE FROM THE SWITCHBOARD TO THE CHARGER)



The photo is necessary so that we could assess how much material is needed (cable, cable protection) and whether it fits under the price of our standard offer which includes materials of up to 10 metres from the switchboard to the charger.

**NB!** The cable is installed on the surface of the wall as shown on the left photo (by using a cable protection tube); hiding the cable inside the wall is not part of standard installation!

It is important that the installation area be accessible to the electrician so that he can immediately start installing the charger (the situation in the photo on the right is not acceptable and may lead to additional costs for the customer, as the electrician's time is spent cleaning that is not included in the quote).

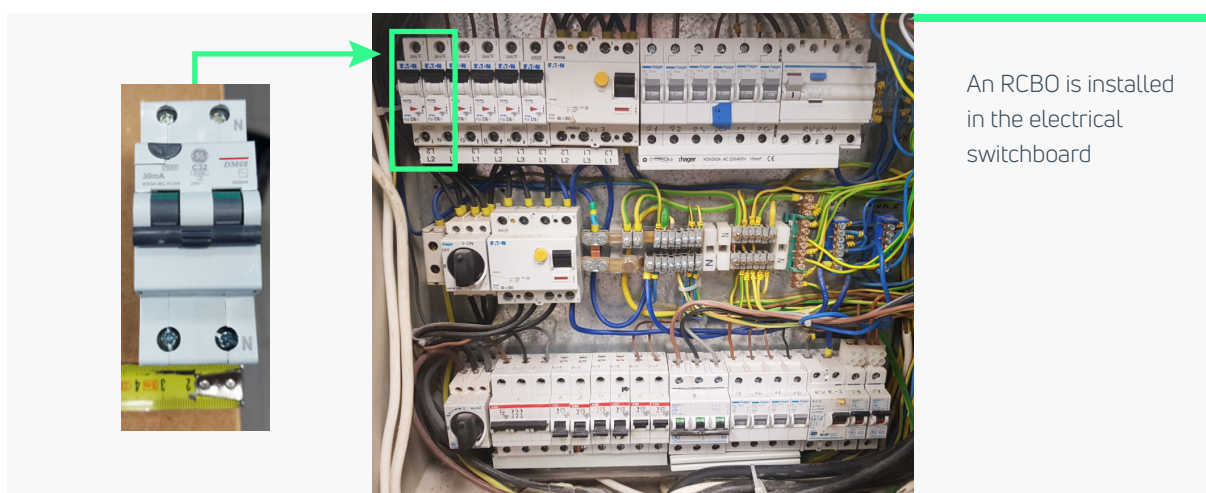


## ADDITIONAL INFORMATION: SPACE IN THE SWITCHBOARD REQUIRED FOR THE INSTALLATION OF AN ELECTRIC CAR CHARGER

With the help of the following photos, you can independently assess whether there is space in your house's switchboard for the installation of additional fuses for the charger. The exact need for space also depends on whether the charger to be installed is single- or three-phase.

If there is no space for fuses in your switchboard, it means that we must make you a specified price quote for the installation which includes additional work in the switchboard.

### SAMPLE 4 (FUSE SPACE NEEDED FOR A SINGLE-PHASE 7.4 kW CHARGER IN A SWITCHBOARD)



### SAMPLE 5 (FUSES FOR A THREE-PHASE 11 kW OR 22 kW CHARGER IN A SWITCHBOARD)

